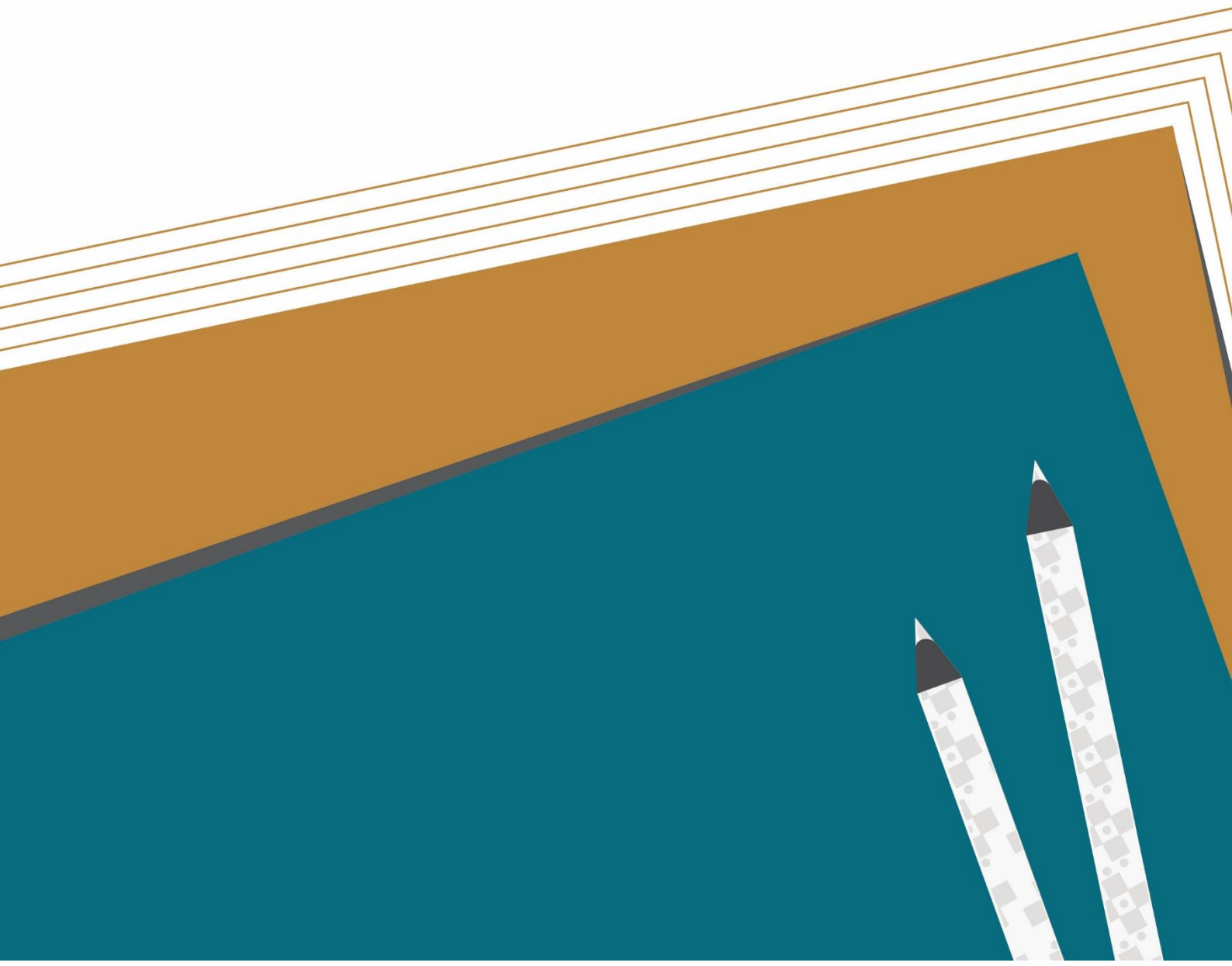


Ensuring Quality of Assessment using Classical Test Theory and Item Response Theory



Ensuring Quality of Assessment using Classical Test Theory and Item Response Theoryⁱ

Context

Assessment is conducted to gather information about students' learning. This information can be used for identifying student's misconceptions, trace learning gaps, report learning levels, certify students and select them for future academic programs or scholarships. When a high-quality assessment is designed, it provides maximum information about students learning. Quality in assessment is characterized by validity and reliability.

A valid test should measure the attainment of learning outcomes. Validity is the property of a test that enables us to make valid interpretation and decision based on assessment data. For example, if a test is designed to measure a student's ability to solve problems, then the test paper should cover a wide range of content that can assess problem solving. A class 5 student should be able to solve problems using all four arithmetic operations when given in numerical format or word problems. If that happens, we can draw a valid interpretation about a student's ability to solve problems. However, if the vocabulary used in word problems is complex or needs a lot of comprehension abilities, then the reading demands associated with the test paper lowers the validity. Similarly, there is a threat to validity when the test paper has solved items from textbook and student is able to recall/ reproduce the answers instead of using the skill of problem solving.

Reliability deals with the consistency and accuracy in measuring the attainment of learning outcomes. For example, if a class 5 student is asked to design a poster on importance of trees to assess her skill of creative writing, it is important to clearly define the indicators of success in the form of rubrics. Creativity here can be assessed through indicators like colours/ patterns, layout, graphics/ photos, titles/ sub-titles, quality of information, writing and grammar/ spelling. Different levels can be defined for each indicator and students can be assessed against each on these indicators. When the same poster is assessed in the absence of these indicators, different teachers may assess it differently. It is also possible to miss assessing the actual cognitive processes which a student needs to attain to master a specific skill.

Quality of Question Paper

The usual approach taken to measure students' ability level in certification and large-scale assessments is to develop a question paper consisting of a number of items. Each of these items measure some facet of the particular ability (e.g., problem solving, creativity, etc.) of interest.

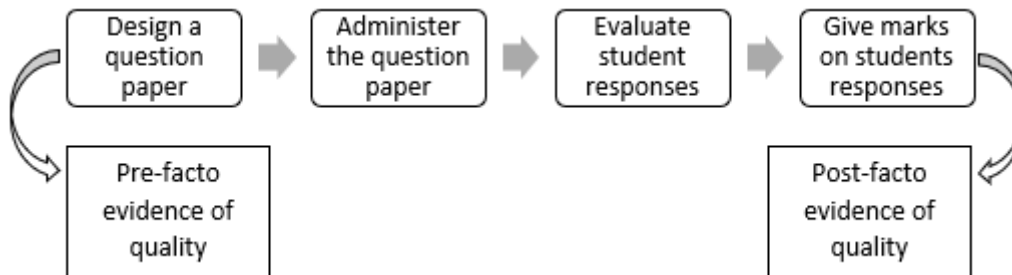


Figure 1. Gathering evidence of quality in a question paper

Pre-facto evidence of quality

It is ensured by having a detailed assessment framework, a balanced blueprint and following some quality protocols for developing items and scoring guides.

- Assessment framework defines measurable and observable learning outcomes for the test construct.
- A balanced blueprint will help to ensure that all the content domains are uniformly addressed and there is an equal distribution across all the domains.
- Some quality checks are considered while developing items- they should be aligned well with the learning outcomes, factually and conceptually correct and unambiguous.
- Scoring guides are designed to clearly communicate the expected response to teachers as well as students.

Post-facto evidence of quality

After we design the question paper, we administer it to our students, evaluate their responses and then give them some marks. Post facto evidence of quality is gathered using student marks. The important question here is why is it important to gather such evidence? In spite of following all the protocols for developing a good quality question paper, often there is a possibility of presence of unintended reasons or irrelevant clues that affects the quality of items. Analysing the items after students have attempted them helps to identify such irrelevant cues and ensure that the question paper is balanced and assesses what it attempts to assess.

In the field of educational measurement and evaluation, two theories dominate namely, Classical Test Theory (CTT) and Item Response Theory (IRT) for gathering post facto quality evidence. These theories link observable variables, such as test scores and item scores, to unobservable variables, such as students' ability level. Students' ability level is defined in relation to the construct that is measured through a test paper, e.g., a student may be highly capable in reading comprehension

while may have low aptitude level in mathematical ability. Therefore, this student's performance will be poor in Mathematics test as compared to a Language test.

The Classical Test Theory is the most prevalent and widely used in our country and uses simple mathematical analysis which is easy to interpret. However, this theory has a few limitations. Item response theory was developed in order to overcome such limitations of Classical Test Theory.

Classical Test Theory (CTT)

In CTT, items are analysed to improve their quality so that they provide maximum information about students' ability levels. Such analysis helps us to estimate the difficulty level of items, if the item is discriminating well between low and high ability level students and the options in multiple choice questions are plausible. Difficulty level, discrimination index and distractor analysis are conducted in CTT. Item responses can only be dichotomous, meaning only two possible answers are acceptable – right or wrong. Such responses are recorded for all types of multiple-choice questions.

Difficulty level

Difficulty level is a measure of individual test item difficulty. It is calculated by finding proportion of students who answered correctly out of the total number of students.

$$\text{Difficulty level} = 1 - \frac{\text{Number of correct responses}}{\text{Total number of students}}$$

Table 1 shows data for students score for a test paper with 10 items of 1 mark each. Yuzvendra could attempt all items correctly, while Ishant made a mistake in two items. Difficulty level of the items can be calculated by counting the number of students those who have answered an item correctly divided by the total number of students. Item 1 is answered correctly by most of the students except Jasprit, Hardik, Rohit and Virat. Therefore, the difficulty level of item 1,

$$\text{Difficulty level} = 1 - \frac{\text{Number of correct responses}}{\text{Total number of students}}$$

Greater the number of students attempting an item correctly, lesser is the difficulty level of items. In this case, item 2 is the easiest as all students have attempted it correctly while item 9 is most difficult since just 4 students could attempt it correctly.

Also, ability level is defined in reference to the number of items attempted correctly - greater the number of items attempted correctly, higher is the ability level of the student. Here, Yuzvendra has the highest ability level.

Student Name	Total Score (%)	Items									
		1	2	3	4	5	6	7	8	9	10
Yuzvendra	100	1	1	1	1	1	1	1	1	1	1
Pujara	90	1	1	1	1	1	1	1	1	0	1
Ishant	80	1	1	0	1	1	1	1	1	0	0
Jasprit	70	0	1	1	1	1	1	0	1	0	1
Rahul	70	1	1	1	0	1	1	1	0	0	1
Jadeja	60	1	1	1	0	1	1	0	1	0	0
Hardik	60	0	1	1	0	1	1	0	1	0	1
Rohit	50	0	1	1	1	0	0	1	0	1	0
Dhoni	40	1	1	1	0	0	0	0	0	1	1
Virat	30	0	1	0	0	0	1	0	0	1	0
% correct		0.6	1	0.8	0.5	0.7	0.8	0.5	0.6	0.4	0.6
Difficulty		0.4	0	0.2	0.5	0.3	0.2	0.5	0.4	0.6	0.4

Table 1. Difficulty level of items

Threats to difficulty level

Ideally, the item difficulty should relate to the skill being assessed, and not due to unfamiliar terminology, complex item format, unclear instructions, ambiguous items, confusing diagrams or text and wrong key. For example, if the following item is given to Indian students, some of them will not be able to answer this correctly. Not because they do not know the answer, but because they may not be familiar with Halloween as a festival. The item in Example 2 will do a better job to assess the same learning outcome.

Example 1

In which season do we celebrate Halloween?
A. Winter B. Rainy C. Summer D. Autumn

Example 2

In which season do we celebrate Independence Day?
A. Winter B. Rainy C. Summer D. Autumn

Often students find an item easy due to irrelevant clues provided in the item which in turn helps them guess the answer. Such clues can be in the form of a key that stands out in an MCQ, implausible distractors and inclusion of a keyword in the distractors. In Example 3, it is very easy to guess the right answer. Option A is too small while option C and D are too big to be the right answer. If the same item is asked in the manner shown in Example 4 where every distractor is included to identify students' misconceptions, then the inherent difficulty of an item is retained.

Example 3

How much is 2^3 ?		
A.0.8	-----	Too small
B.8	-----	Correct answer
C.80	-----	Too big
D.800	-----	Just too big

Example 4

How much is 2^3 ?		
A.5	-----	$(2+3)$
B.6	-----	$(2*3)$
C.8	-----	$(2*2*2)$
D.9	-----	$(3*3)$

Discrimination index

It is a measure of the effectiveness of an item in discriminating between high and low ability students on a test. The notion is that high-ability students will tend to choose the right answer, on the other hand low-ability students will tend to choose the wrong answer. High ability or low ability is purely based on performance on the test. There is no pre-facto evidence of determining it. Discrimination index is calculated by taking the top scoring 1/3 of students and lowest scoring 1/3 of students. Therefore, we would expect that more correct answers will be given by top scoring 1/3 students as compared to lowest scoring 1/3 of students.

Discrimination index

$$= \frac{\text{Number of correct responses in higher group} - \text{Number of correct responses in lower group}}{\text{Total number of students in each group}}$$

Items	# Correct (Upper group)	# Correct (Lower group)	Difficulty	Discrimination
Item 1	4	2	0.4	0.4
Item 2	5	5	0	0
Item 3	4	4	0.2	0
Item 4	4	1	0.5	0.6
Item 5	5	2	0.3	0.6

Item 6	5	3	0.2	0.4
Item 7	4	1	0.5	0.6
Item 8	4	2	0.4	0.4
Item 9	1	3	0.6	-0.4
Item 10	4	2	0.4	0.4
Table 2. Difficulty level and discrimination index of items				

In Table 2, item 9 is poorly discriminating between low and high ability level students, since in high ability group just 1 student could answer this item correctly while in low ability group, 3 students answered it correctly. This indicates the presence of some irrelevant clue in the item letting students to guess the right answer. Therefore, such item should be eliminated post qualitative review as they are not giving true measure of students' ability level.

Distractor analysis

It is conducted to evaluate the efficiency of each distractor for a multiple-choice question. Ideally, all distractors should be equally plausible to students who do not know the right answer. It is advisable to eliminate distractors that are never chosen which means they are not working. In Example 3 that we have discussed, option A, C and D are implausible and rarely chosen by students. Such distractors should be replaced by the options shown in Example 4.

Item 1	Group	A	B*	C	D	
	High	10	40	5	5	Difficulty = 0.4
	Low	15	20	0	5	Discrimination = 0.57
	Total	25	60	5	10	
Item 2	Group	A	B*	C	D	
	High	5	5	0	35	Difficulty = 0.85
	Low	20	10	0	25	Discrimination = -0.14
	Total	25	15	0	60	
Table 3. Distractor analysis of items						

Table 3 shows number of correct responses for each option in item 1 and item 2. For item 1, correct answer is option B. 60 students have attempted it correctly. Therefore, difficulty level is 0.4. Greater number of students in the high ability group have attempted this correctly, hence the discrimination index is positive 0.57. It will be a good idea to investigate Option C since there are very few checks on these options and include better quality distractors. For item 2, while option B is the correct answer, majority of the students have chosen option D as the right answer. Only 15 students could attempt it correctly, this is a very difficult item with difficulty level equal to 0.85. Greater number of students in the lower ability group have attempted this item correctly as compared to the higher ability group, therefore the discrimination index is negative here. All the options need to be relooked at as students seems to randomly choose the correct answer in this case.

Summary of CTT

Difficulty level	Low – Less than 0.3; Moderate – 0.3 to 0.7; High – More than 0.7
Discrimination index	Poor – Less than 0.2; Good – More than 0.2
Distractor analysis	All distractors should be plausible

** The range may vary for each assessment purpose.*

Limitations of CTT

One main shortcoming is that the estimates on difficulty level and discrimination index are sample dependent, and this dependency reduces their utility. CTT is most useful when the student sample is similar to the student population for whom the test is being developed. Secondly, student's ability cannot be judged just based on the number of items answered correctly, rather the item attribute, such as its difficulty level, should also be taken into account. In Table 1, both Jadeja and Hardik have attempted different set of six items correctly. However, since the difficulty level of items are not the same, having similar percentage correct does not ensure similar ability levels. Item response theory overcomes both these limitations.

Item Response Theory (IRT)

It is a statistical theory about student's performance in item and test and how performance relates to the student abilities that are measured by the items in the test. It is based on the assumption that students of high ability level have higher probability of answering a difficult answer correctly while a student of lower ability level have lower probability of answering a difficult answer correctly. There is an exponential relation between probability and ability level. There are several IRT models –

- Rasch model (1 parameter model) - Difficulty level is referred in 1 parameter model

- 2 parameter model - Difficulty level and Discrimination index is referred in 2-parameter model
- 3 parameter model - Difficulty level, Discrimination index and Guessing parameter is referred in 3-parameter model.

In this article, 2 parameter model for dichotomous responses is described. Item responses can be discrete (right or wrong) or continuous and can be dichotomously or polychotomously scored. The marking scheme for constructed response items range from zero to highest marks allotted to that item. Every student attempting these items have some underlying ability level (θ). The probability $P(\theta)$ that a student responds correctly to an item depends upon his/ her ability level. For an average difficulty level item, this probability will be small for students of low ability and high for students of high ability as shown in Figure 2.

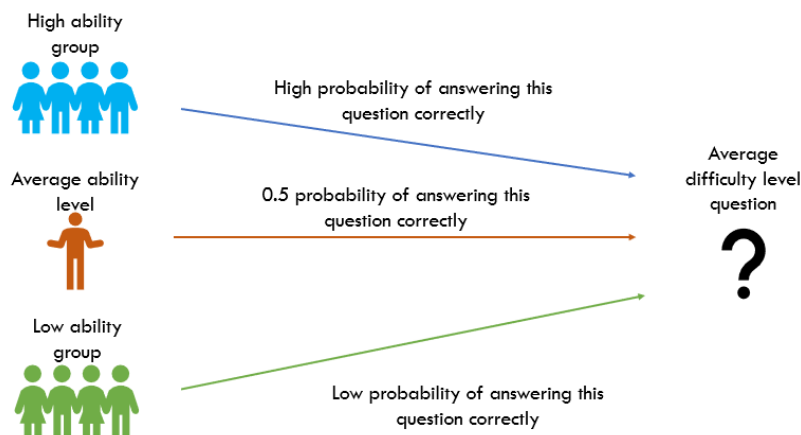


Figure 2. Item response theory – Exponential model

Item Characteristics Curve (ICC)

Figure 3 shows the graph of probability $P(\theta)$ that a student responds correctly to an item to their ability level (θ). Probability of correctly responding to an item increases with student's ability level.

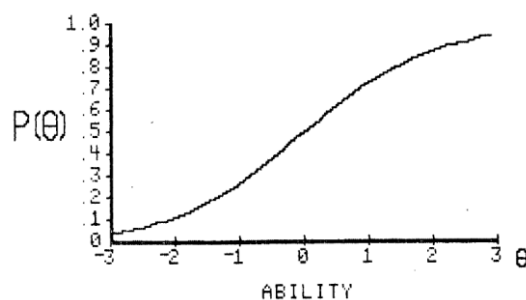


Figure 3. Item Characteristics Curve - Example

Two technical properties describe item characteristic curve. The first is the difficulty of the item which describes where the item functions along the ability scale. For example, an easy item functions among the low-ability students and a hard item functions among the high-ability students; thus, difficulty is a location index. Difficulty level is the point on the ability scale where the

probability of correct response for students of that ability is 0.5. In Figure 4, the difficulty level of upper curve is -1.5, middle curve is 0.5 and lower curve is 1.5.

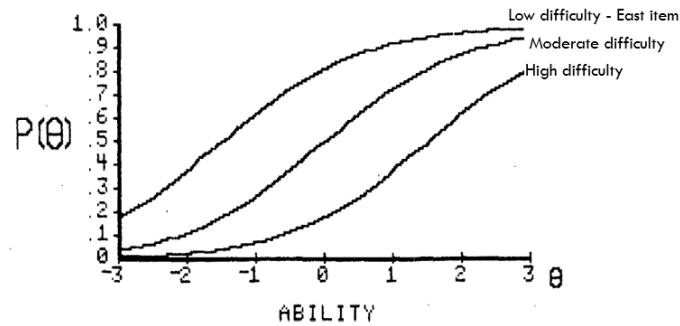


Figure 4. Item Characteristics Curve with same discrimination and different difficulty levels

Discrimination index describes how well an item can differentiate between students having abilities below the item location and those having abilities above the item location. This property essentially reflects the steepness of the item characteristic curve in its middle section. The steeper the curve, the better the item can discriminate. The flatter the curve, the less the item is able to discriminate since the probability of correct response at low ability levels is nearly the same as it is at high ability levels. Figure 5 shows three ICC curves with same difficulty level of 0.5 and different discrimination indices.

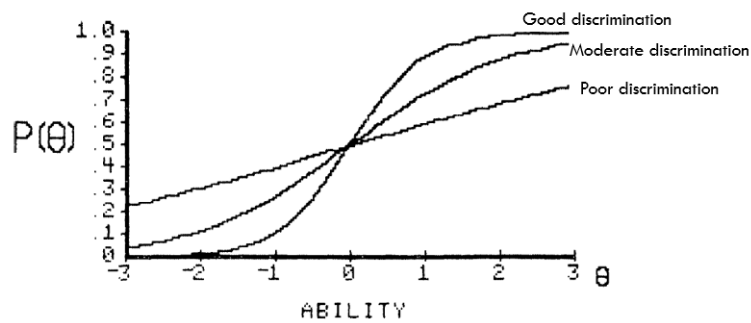


Figure 5. Item Characteristics Curve with same difficulty levels and different discrimination index

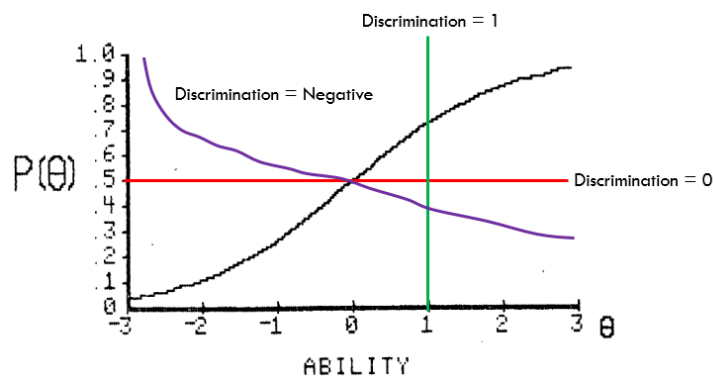


Figure 6. Item Characteristics Curve with ideal, negative and zero discrimination

Test Information Function

It is the total of the item information functions of all the items in the question paper. If the question paper is made up of test items that are relatively difficult, then the test information function is shifted to the right and vice versa. The general slope of the curve is related to how students' performance in a test depends upon the ability level. The mid-ability score with respect to the curve defines the difficulty of the complete test, while the length of the peak denotes the discrimination index.

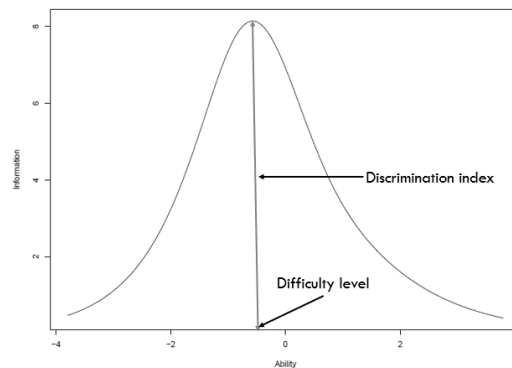


Figure 7. Test information function – Example

Test information function helps to estimate the overall performance of the question paper. An ideal question paper should have moderate difficulty level and a moderate to high discrimination index. Figure 8 and 9 shows sample test information functions.

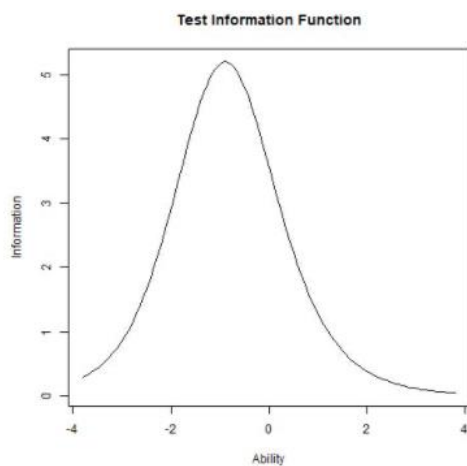


Figure 8. Low difficulty level and high discrimination index

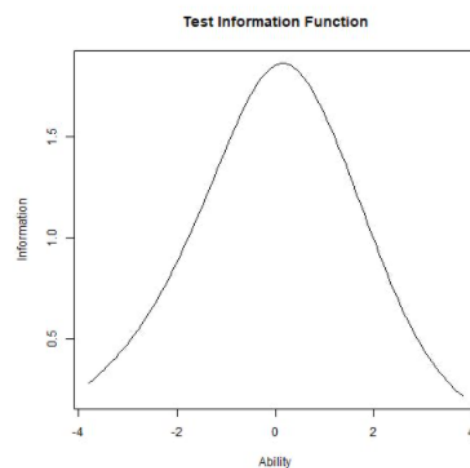


Figure 9. High difficulty level and low discrimination index

Summary of IRT

Difficulty level	Low – Less than -1; Moderate – -1 to +1; High – More than 1
Discrimination index	Poor – Less than 1.2; Good – More than 1.2
Item information function	Ideal item - Should start from zero and should be steeper in the middle
Test information function	Ideal item - Peak of the curve should be at zero and should have a tall peak

**The range may vary for each assessment purpose.*

Conclusion

This article provides a brief introduction to classical test theory (CTT) and item response theory (IRT). The Rasch and two-parameter models are the two models most frequently used in applications because of their usability and ease in implementation. Basic concepts and interpretations of these basic models are described. CTT and IRT help us to understand more about the quality of our question paper by finding difficulty level, discrimination index of items and analysing the distractors of multiple-choice questions.

One of the important applications of both CTT and IRT is the selection of quality items. The final selection of items will depend on the information they contribute to the overall information provided by the question paper. Item characteristics curve helps to determine the contribution of each test item to the test information function independently of other items in the test. Good quality items are retained while the poor-quality items are reviewed and modified. A balanced question paper should have a good range of items with low, moderate, and high difficulty levels. All the items should discriminate well between low and high ability level students. Further in order to use the true power of multiple-choice questions, it is essential to use plausible distractors.

References

1. Downing, S.M., & Haladyna, T.M. (Eds.) (2006). Handbook of test development. Philadelphia: Taylor & Francis.
2. Officer, C. P. (2016). Introduction to Classical Test Theory with CITAS.
3. Baker, F. B. (2001). The basics of item response theory. For full text: <http://ericae.net/irt/baker>.

¹ This article is authored by Shilpi Banerjee. She works as Assistant Professor in the School of Continuing Education at Azim Premji University. She can be reached at shilpi.banerjee@azimpremjifoundation.org.

This article can be cited as-

Ensuring quality of assessment using classical test theory and item response theory, Assessment resources, 2021, Azim Premji University

Ensuring Quality of Assessment using Classical Test Theory and Item Response Theory

