



Azim Premji
University

POST GRADUATE DIPLOMA IN EDUCATION-

Teaching children with Learning Disabilities

For Practicing Teachers, School Leaders,
Special Educators and Counsellors





Introduction

About 5 to 15 per cent of children in classrooms in India have a learning disability. Policies mandate that all children need to be part of the regular school system, irrespective of their learning needs. Teacher preparedness is critical for ensuring that children with learning disabilities become a part of an inclusive school system.

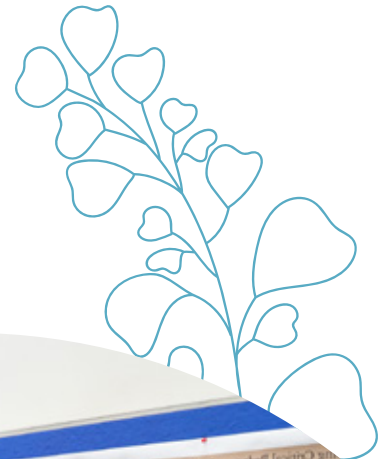
Enabling teachers with the necessary knowledge to adapt the curriculum and modify teaching strategies will help children cope with the demands of a regular school curriculum and make them lifelong autonomous learners.

The Postgraduate Diploma programme in Teaching Children with Learning Disabilities aims to equip teachers understand the nature and characteristics of the condition. It helps them develop competencies needed to include children with learning disabilities in the classroom, making them effective inclusive school teachers, thereby fostering their professional growth in the workplace.



Who should join

This postgraduate diploma is open to practicing regular school teachers, special educators, counsellors and school heads working in private and public school systems in India. Professionals working in the education space with teachers and school leaders through social sector organisations would also benefit from this programme.



Key features of the programme

- This programme is aligned to the credit structure as defined by the National Credit Framework (NCrF) issued by UGC in April 2023
- The programme provides knowledge on relevant theories, research-based teaching methods and practices and hands on knowledge enabling the understanding of the nature and needs of children with learning disabilities and including them in the regular classroom.
- Become a member of a community of reflective practitioners through our alumni network.
- Participants have the flexibility of joining the PG Diploma Programme or taking one or more Certificate Programmes individually.

Programme Structure

The 40 credits, 12 months PG Diploma Programme is offered in a blended mode, with online and on-campus interaction.

It comprises of four Certificate Programmes (12 weeks duration, 10 credits each) covering key aspects of early childhood education.

The PG Diploma is awarded on the completion of the four Certificate Programmes and this can be completed with a maximum time of 2 years.



	Title of Certificate	Duration and Credits	Mode
1.	Learning Disabilities in the Classroom <i>Course 1:</i> An Overview of Learning <i>Course 2:</i> Introduction to Learning Disabilities <i>Course 3:</i> Learning Disabilities and associated conditions <i>Course 4:</i> Project based Course	15 th February to 15 th May 12 weeks/10 credits	Online: 11 weeks 1 week on-campus/face to face interaction
2.	Learning Disability: Identification and Assessment <i>Course 1:</i> Growth and Development <i>Course 2:</i> Screening, Identification and Assessment of Learning Disability <i>Course 3:</i> Observing and Nurturing the Whole Child <i>Course 4:</i> Project based Course	16 th May to 15 th August 12 weeks/10 credits	Online: 11 weeks 1 week on-campus/face to face interaction
3.	Learning Disability: Teaching Methods and Strategies <i>Course 1:</i> Intervention for Children with Learning Disability – An Overview <i>Course 2:</i> Instructional Strategies in the Curricular Areas for Children with Learning Disability <i>Course 3:</i> Intervention: Social, Emotional Behaviour <i>Course 4:</i> Project based Course	August to October 12 weeks/10 credits	Online: 11 weeks 1 week on-campus/face to face interaction
4.	Inclusive Education for Children with LD <i>Course 1:</i> Inclusive Education <i>Course 2:</i> Universal Design of Learning and Differentiated Instruction <i>Course 3:</i> Collaboration and Support for Inclusive Education <i>Course 4:</i> Project based Course	November to January 12 weeks/10 credits	Online: 11 weeks 1 week on-campus/face to face interaction

- Online classes will be held twice a week for two hours each during weekdays between 4.30 to 6.30 p.m. Classes may be rescheduled in case of exigencies.
- Five days of on-campus sessions will be held once for every Certificate Programme, from 9 am to 5 pm, Mon to Friday.

Programme pedagogy

The programme will be offered in blended mode:

Online — This will be conducted through lectures, group work, workshops, presentations, readings, participation in discussion forums on Learning Management Systems, audio/video material and regular assessment.

On-campus/Face-to-face interaction — Each Certificate Programme will have five days on-campus engagement, providing opportunities for sharing of learning through intensive group work and interaction with experts and practitioners from the field.

- The on-campus components will be held at the Azim Premji University, Bengaluru.
- Registering for individual Certificate Programmes, would entail mandatory attendance in the on-campus face-to-face component for the respective certificate.

- Registering for the entire PG Diploma Programme would entail mandatory attendance in the on-campus component in minimum of the two Certificate Programmes. The participant will have the flexibility of choosing to attend the on-campus component or completing an alternate portfolio for the remaining two Certificate Programmes.

Eligibility

Open to practicing regular school teachers, special educators, counsellors and school heads working in private and public school systems and professional working in the space of education with minimum 2 years of relevant work experience.

- Undergraduate in any discipline (preferred)
- Working knowledge of English (reading, writing, and speaking)

Admission Process

Participants can enter into the PG Diploma Programme through any of the Certificate Programmes. Admissions are open two months prior to the commencement of the programme. The two steps of the process are :-

- Step-1: Online application form with Statement of Purpose
- Step-2: Panel Interview in online mode.



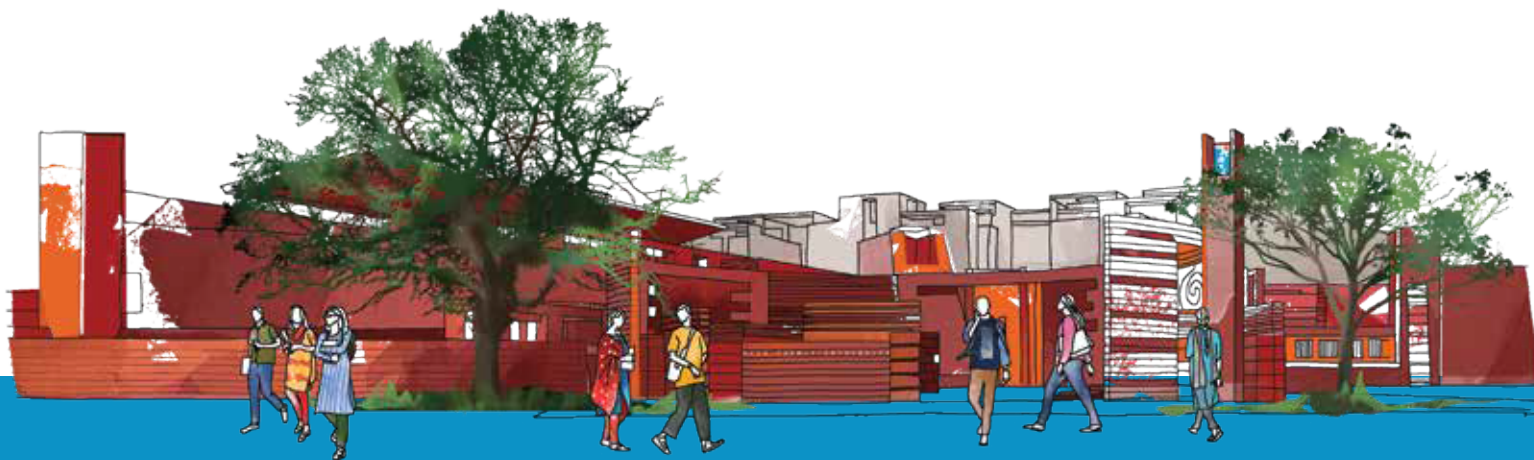
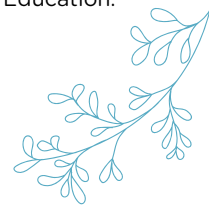


Since its establishment in 2010, Azim Premji University has focused on the highest quality of education, driven by excellence. Committed to contributing to a just, equitable, humane and sustainable society, Azim Premji University is a vibrant and inclusive space for every student.

The University offers postgraduate degrees in Education, Development, Economics and Public Health. It also offers undergraduate degrees in Social Science (Economics, Social Science), Science (Biology, Chemistry, Environmental Science & Sustainability, Physics and Mathematics) and Humanities (English, History and Philosophy); and a dual degree in Science and Teacher Education.

Azim Premji University Bhopal is now operational, from the academic year 2023-24.

To know more, visit: <https://azimpremjiuniversity.edu.in>



Contact Us

Azim Premji University, Bengaluru
Burugunte, Bikkanaahalli Main Road,
Sarjapura, Bengaluru, Karnataka - 562 125

Azim Premji University, Bhopal
Kanhasaiya, Bhopal
Madhya Pradesh - 462 022