



Azim Premji  
University

POST GRADUATE DIPLOMA IN EDUCATION-

# Early Childhood Education

For Practicing Teachers, School Leaders,  
Special Educators and Counsellors





## Introduction

Early childhood education plays a critical role in the holistic development of young children and in building a strong foundation for their school education. The National Education Policy, (NEP) 2020 has proposed several measures to achieve universal provisioning of quality early childhood development, care, and education.

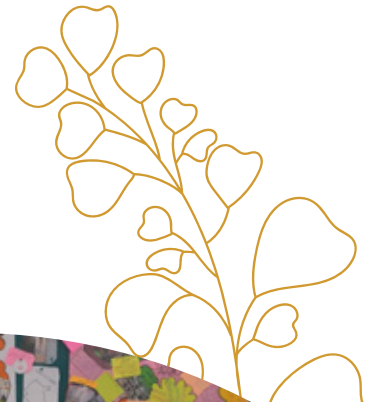
The need for well-trained preschool teachers, programme managers and functionaries in the early childhood education space is paramount considering the very large population of children in the 3 – 8 years age group in the country and the need for setting up of good quality early childhood education practices as emphasised in the NEP 2020 and the NCF-FS, 2022.

The Postgraduate Diploma in Early Childhood Education is a programme that aims to fulfil the need for professional development in this field. The programme aims to develop capability of the teachers to create a more significant impact in their workplace as well as nurture their skills and knowledge to seek enhanced career opportunities. It endeavours to support the ECE practitioners build perspective, sensitivity, and acquire hands on capabilities to work directly with children in the age group of 3– 8 years.



## Who should join

The Postgraduate Diploma in Early Childhood Education is designed for teachers working with children in the age group of 3 – 8 years. Professionals working in the early childhood education space with teachers and school leaders through social sector organisations would also benefit from this programme. To join it, a proven interest in working with young children and relevant work experience of 2 years or more, is essential.



## Key features of the programme

- The programme is aligned to the credit structure as defined by the National Credit Framework (NCrF) issued by UGC in April 2023.
- Course content and pedagogy follow recommendations of the NEP 2020 and the NCF-FS 2022, with emphasis on relevant theories, practice and hands on skills required for building expertise in the area.
- Become a member of a community of reflective practitioners through our alumni network.
- Participants have the flexibility of joining the PG Diploma Programme or taking one or more Certificate Programmes individually.

## Programme Structure

The 40 credits, 12 months PG Diploma Programme is offered in a blended mode, with online and on-campus interaction.

It comprises of four Certificate Programmes (12 weeks duration, 10 credits each) covering key aspects of early childhood education.

The PG Diploma is awarded on the completion of the four Certificate Programmes and this can be completed with a maximum time period of 2 years.





Title of Certificate		Duration and Credits	Mode
1.	<p><b>Early Childhood Education: Development and Learning in the Early Years</b></p> <p><i>Course 1:</i> Understanding ECE: Themes and Issues</p> <p><i>Course 2:</i> Principles and Perspectives of ECE</p> <p><i>Course 3:</i> Project based Course</p>	<p>February to April</p> <p><i>12 weeks/10 credits</i></p>	<p>Online: 11 weeks</p> <p>1 week on-campus/face to face interaction</p>
2.	<p><b>Curriculum and Pedagogy in Early Childhood Education</b></p> <p><i>Course 1:</i> Curriculum for Fostering Physical/Motor, Cognitive Development and Early Math</p> <p><i>Course 2:</i> Curriculum for Fostering Social Development, Language and Early Literacy</p> <p><i>Course 3:</i> Project based Course</p>	<p>May to July</p> <p><i>12 weeks/10 credits</i></p>	<p>Online: 11 weeks</p> <p>1 week on-campus/face to face interaction</p>
3.	<p><b>Early Identification, Intervention, and Inclusion</b></p> <p><i>Course 1:</i> Early Inclusion</p> <p><i>Course 2:</i> Early Identification and Intervention</p> <p><i>Course 3:</i> Project based Course</p>	<p>August to October</p> <p><i>12 weeks/10 credits</i></p>	<p>Online: 11 weeks</p> <p>1 week on-campus/face to face interaction</p>
4.	<p><b>Programme Management and Professional Development in Early Childhood Education</b></p> <p><i>Course 1:</i> Programme Planning and Management</p> <p><i>Course 2:</i> Professional Development of Early Childhood Educators</p> <p><i>Course 3:</i> Project based Course</p>	<p>November to January</p> <p><i>12 weeks/10 credits</i></p>	<p>Online: 11 weeks</p> <p>1 week on-campus/face to face interaction</p>

## Programme pedagogy

The programme will be offered in blended mode:

**Online** — This will be conducted through lectures, group work, workshops, presentations, readings, participation in discussion forums on Learning Management Systems, audio/video material and regular assessment.

**On-campus/Face-to-face interaction** — Each Certificate Programme will have five days on-campus engagement, providing opportunities for sharing of learning through intensive group work and interaction with experts and practitioners from the field.

- The on-campus components will be held at the Azim Premji University, Bengaluru.
- Registering for individual Certificate Programmes, would entail mandatory attendance in the on-campus face-to-face component for the respective certificate.

- Registering for the entire PG Diploma Programme would entail mandatory attendance in the on-campus component in minimum of the two Certificate Programmes. The participant will have the flexibility of choosing to attend the on-campus component or completing an alternate portfolio for the remaining two Certificate Programmes.

## Eligibility

Open to teachers from public and private school systems working with children in the age group of 3 – 8 years and for ECE professionals with minimum 2 years of relevant work experience. The eligibility criteria are:

- Undergraduate in any discipline (preferred)
- Working knowledge of English (reading, writing, and speaking)

## Admission Process

Participants can enter into the PG Diploma Programme through any of the Certificate Programmes. Admissions are open two months prior to the commencement of the programme. The two steps of the process are :-

- Step-1: Online application form with a Statement of Purpose
- Step-2: Panel Interview in online mode.





Since its establishment in 2010, Azim Premji University has focused on the highest quality of education, driven by excellence. Committed to contributing to a just, equitable, humane and sustainable society, Azim Premji University is a vibrant and inclusive space for every student.

The University offers postgraduate degrees in Education, Development, Economics and Public Health. It also offers undergraduate degrees in Social Science (Economics, Social Science), Science (Biology, Chemistry, Environmental Science & Sustainability, Physics and Mathematics) and Humanities (English, History and Philosophy); and a dual degree in Science and Teacher Education.

Azim Premji University Bhopal is now operational, from the academic year 2023-24.

To know more, visit: <https://azimpremjiuniversity.edu.in>



## Contact Us

Azim Premji University, Bengaluru  
Burugunte, Bikkanaahalli Main Road,  
Sarjapura, Bengaluru, Karnataka - 562 125

Azim Premji University, Bhopal  
Kanhasaiya, Bhopal  
Madhya Pradesh - 462 022